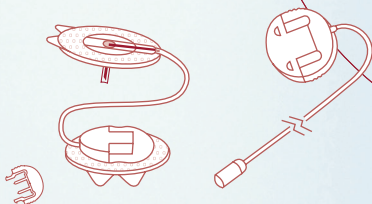


neria™ detach infusion sets



Product Specifications

Cannula:	Stainless Steel
Insertion angle:	90 degrees (straight in)
Disconnection:	Yes
Needle gauge:	G27
Needle lengths:	6, 8, or 10 mm
Tubing lengths:	60, 80 or 110 cm (23", 31" or 43")
Adhesive:	Built-in

Gauge size

G27

Needle lengths

- 6 mm
- 8 mm
- 10 mm

Tubing lengths

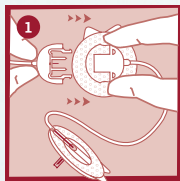
- 60 cm - 23"
- 80 cm - 31"
- 110 cm - 43"

The neria™ detach infusion sets are sold in boxes containing 10 sets. Needles are also sold separately – in boxes containing 10 pcs/box.

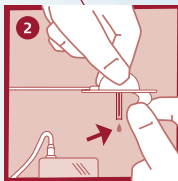
Fact Card

Distributed by:

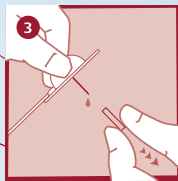
neria™ detach infusion sets user steps



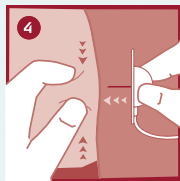
Connect the connector needle with the coupling housing.



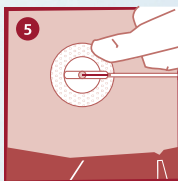
Prime the tubing according to the pump manufacturer's instructions for use and remove the adhesive backing.



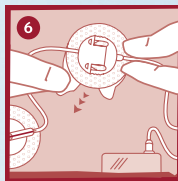
Remove the needle guard.



Pinch the skin with one hand and insert the neria™ detach infusion set vertically.



Press the adhesive to secure neria™ detach infusion set to the skin.



Remove the adhesive from the coupling housing and place coupling housing on the skin.

Please note that this guide only illustrates some of the steps to follow when inserting the neria™ detach infusion sets and it is not a substitute for reading the instructions for use which comes with the product.

neria is a trademark of Unomedical a/s